



**Herne Hill, Herne Hill, SE24**

1 bedroom flat - conversion to let

**£403 Per Week**

Furnished

## Property Details

A fantastically spacious and well-proportioned one bedroom flat, tucked away quietly within a particularly attractive, detached Victorian townhouse on the highly sought-after Herne Hill. Moments from the centre of Herne Hill and boasting a very impressive shared rear garden.

A large open plan room makes the perfect heart of this home, a modern and well-equipped kitchen occupies one half, with an abundance of storage options and surface space, completed with a stylish tiled back-splash and integrated appliances. The kitchen feeds through to an ample living area, comfortable dimensions to relax and unwind with high ceilings adding to the airy atmosphere. The bedroom, in line with the rest of the flat is spacious, with high ceilings and offers a tranquil, appealing feel, complete with handy built-in storage. A family-sized bathroom and separate WC completes this charming flat, which further benefits from a mature, manicured shared garden. The garden is idyllic and absolutely perfect for working from home in the warmer months or retreating to outside space within the comfort of the flat

The apartment benefits from a lot on its doorstep. The amenities of Herne Hill like Brockwell Park, the famous weekly farmers market and award-winning pubs and restaurants, Dulwich Village is also just a 15-minute walk away, so there is something to cater for all potential purchasers. The property is just six minutes' walk from Herne Hill station, with trains to London Victoria in just 9 minutes, Blackfriars in 12

## Features

- One bedroom
- Victorian conversion
- Large shared garden
- Characterful and airy
- Easy access to Brixton and Dulwich Village
- Local amenities of Herne Hill

Council tax band B      EPC rating D (62)





Herne Hill, Herne Hill, SE24

Herne Hill, Herne Hill, SE24

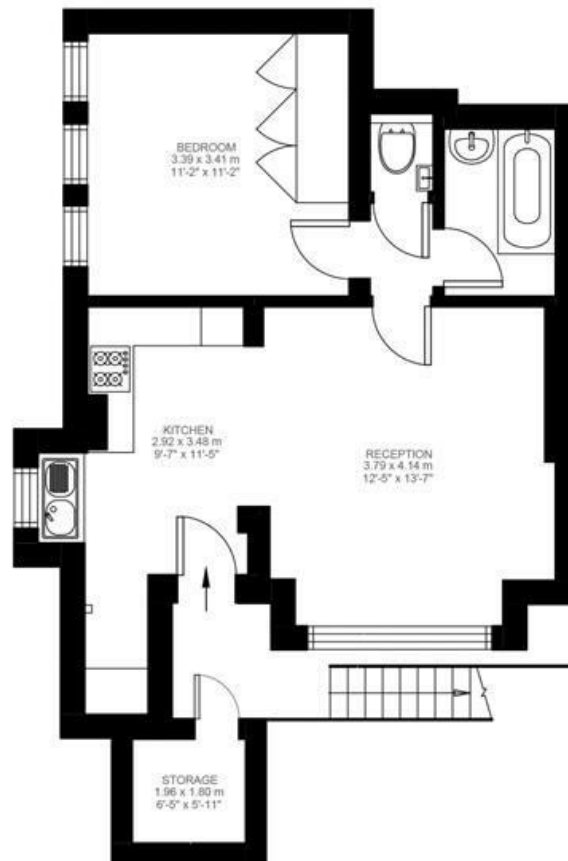
1 Bedroom Flat

Approximate internal area: **479 sqft 45 sqm**

Approximate storage:

**38 sqft 4 sqm**

Approximate total internal area: **49 sqm 522 sqft**



Lower Ground Floor



While we do try our very best, floor plans are produced as a guide only and we take no responsibility for the precise accuracy with which any property is represented.



Herne Hill, Herne Hill, SE24

